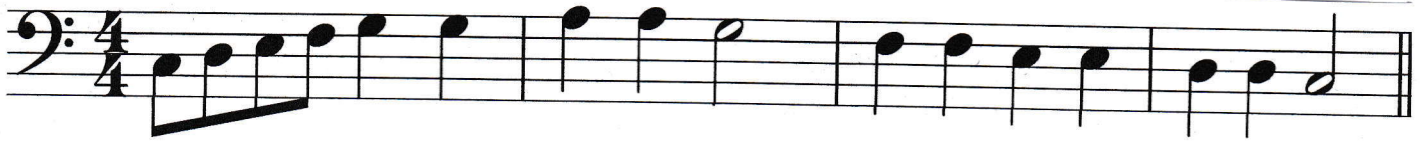


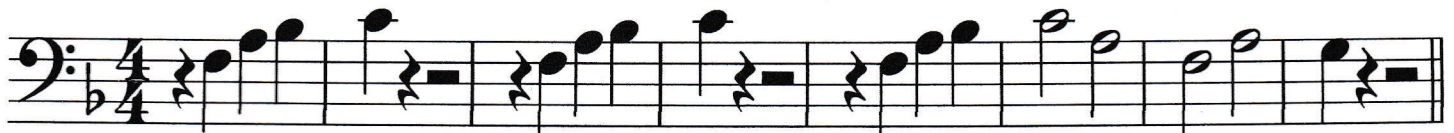
This is a C major scale. There are no accidentals (sharps or flats) in the key signature. Play the scale and the piece that follows it.



This is an F major scale. Look at the left hand side of the staff, just after the treble clef. This shows that there is a Bb in the key signature. This means that every time you see a B you have to play a Bb. Try playing the scale. If you can't get up to the higher notes, don't worry. Play the scale pattern on the line below.



Now play this famous piece. Remember, it is in F major so there is a Bb in the key signature. Remember to play all of those B flats!



This is a G major scale. The key signature is different this time. It has an F# in it. That means that every time you see an F you have to play it as an F#. Play the scale, or if notes are too low, play the scale pattern on the line below it.



Now play the piece below. Remember, it is in G major so there is an F# in the key signature. Remember to play all of those F sharps!

