

Bossa Nova

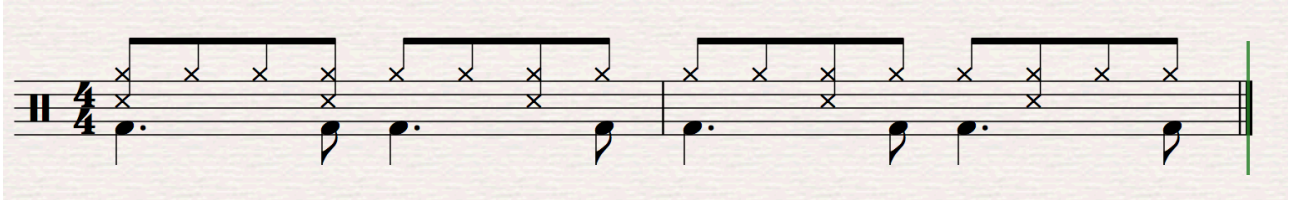
Greg Burns

The Bossa Nova is another great Brazilian groove that originated when traditional Brazilian samba met American Jazz and soft Portuguese singing. The first Bossa Nova tune is widely regarded to be *Chega de Saudade* by Jobim and de Morães, and performed by the great singer and guitarist João Gilberto. However, the most popular western example of the Bossa Nova is a tune called *Soul Bossa Nova* - which was used as the theme tune in some Austin Powers films. Check them both out to get a feel of what the Bossa is really about!

The groove itself is built from what we call a *clave* - a rhythmic pattern used as a base for many Latin and Afro-Cuban pieces. In this case it's a 3-2 *clave* (three notes in the first bar, two in the second)



This then acts as the *snare* pattern for the Bossa. We play it as a *rim click*, to create a sound similar to a *wood block*, or a pair of *wooden Clave*.



Be sure to play this groove at both a slow and fast tempo. It's a very sensitive style which lends itself to the slow sensitivity of an acoustic guitar. Check out the tune 'The Girl from Ipanema' - another famous example of the Bossa.

Try to play the groove along with all 3 of these tunes. Take note of where the Bass Guitar sits in each and see if you can really lock in.