



Castle on a Cloud

Book:
ABRSM Violin Grade 2
2020-2023

DYNAMICS

- * This piece is mainly marked at soft dynamics such as *p* (quiet), *pp* (very quiet) and *mp* (medium quiet).
- * There are crescendos and diminuendos, where the music should grow louder and then die away again, like swells.



FEEL

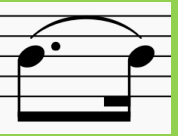
- ♦ Lento = slowly and poco rit = a little slow down.
- ♦ The piece changes time signature, but keep counting a constant crotchet beat and you should stay in time.
- ♦ It is a sad song, but the third line feels happier.

EXTRA USEFUL TIPS

- * This song is from the musical 'Les Miserables'. Have a listen to it!
- * Think about your bow lengths and speed for the slurred notes.

RHYTHM

- ♦ Watch out for the rests!
- ♦ This rhythm is played 'long, short':
- ♦ This rhythm comes a lot of times in the piece:



1 e + a



1 + a 2 + 3 +

OR Straw-berry co-fee co-fee

